

GEM80 & eWON Setup Quick Guide



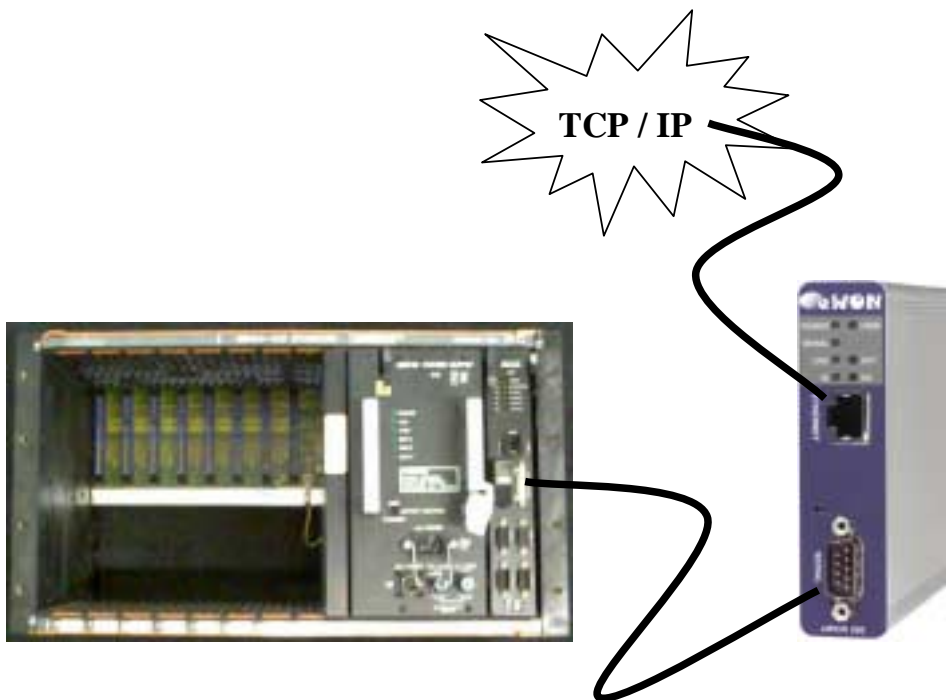
Introduction to the eWON

The eWON is an intelligent, programmable Ethernet Gateway, which can be used to bridge GEM 80 PLCs onto an Ethernet network, via the PLC serial port (Port3).

This provides network-based access to GEM PLCs, for data-collection and programming.

Contents

eWON Installation	2
Step 1: eWON Dip-Switch Positions	2
Step 2: eWON power connection	2
Step 3: eWON Setup - eBuddy	3
Step 4: Setting an eWON IP Address	5
eWON Configuration	8
Step 1: User logon	8
Step 2: eWON serial port configuration	9
Appendix 1	11
Serial cable connections	11
Appendix 2	12
EWON led front panel LEDs	12



GEM80 & eWON Setup Quick Guide

eWON Installation

Step 1: eWON Dip-Switch Positions

The configuration of the physical serial mode of the eWON is done by a set of 4 dip switches located on the left side of the unit.

The settings for the GEM are shown in the table below:



Step 2: eWON power connection

The eWON has to be supplied by an external voltage, source ranging from 12 to 24 VDC. The power supplied must be a Class 2 or Level 3, SELV-compliant (security voltage) and limited in current to a max of 300mA. The data given below is intended to allow correct selection of the external power supply.

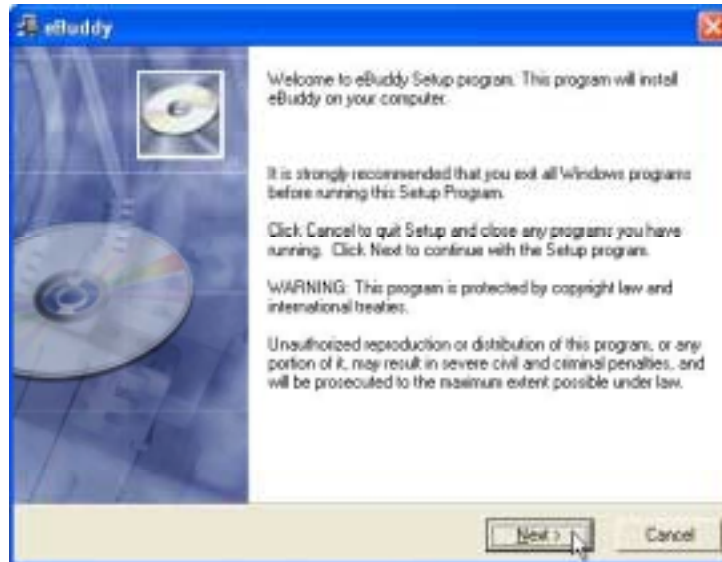
Specification	Value
Secondary PS voltage	from 12 to 24 VDC +/-20% (SELV-compliant)
Max secondary PS current	300 mA max.
eWON current protection	300 mA by auto fuse
eWON voltage protection	30V by varistor
eWON EMI filter	Common mode filter (*)
Power absorbed (typ)	3 Watts

GEM80 & eWON Setup Quick Guide

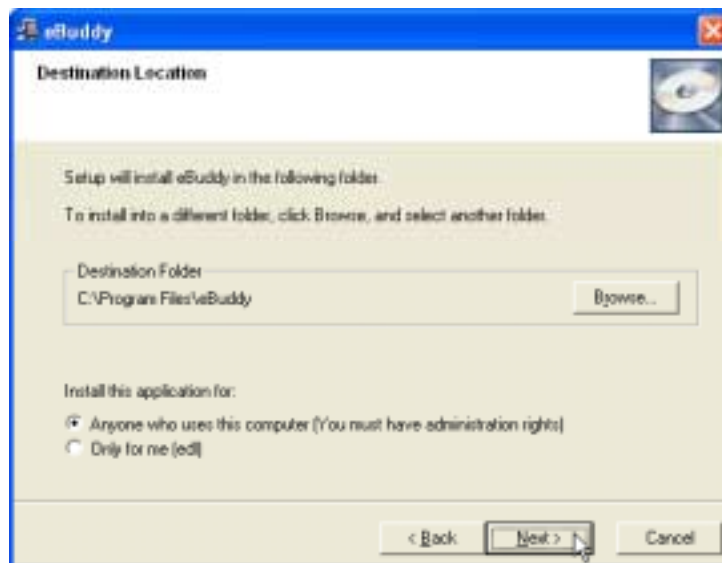
Step 3: eWON Setup - eBuddy

eBuddy is an ACT'L software that can be used (among other purposes) to setup the IP address from the eWONs that are connected on your network.

After you have downloaded eBuddy from the eWON web site (<http://www.ewon.biz>), you will just have to launch *eBuddySetup.exe* and follow the onscreen instructions from the setup wizard:



Click on *Next* to reach the following page. Choose the destination installation folder then click on *Next*:



GEM80 & eWON Setup Quick Guide

Click *Next* in the confirmation page. The software is then installed in the chosen destination folder.

Click on the *Finish* button to exit from the installation and launch eBuddy.



GEM80 & eWON Setup Quick Guide

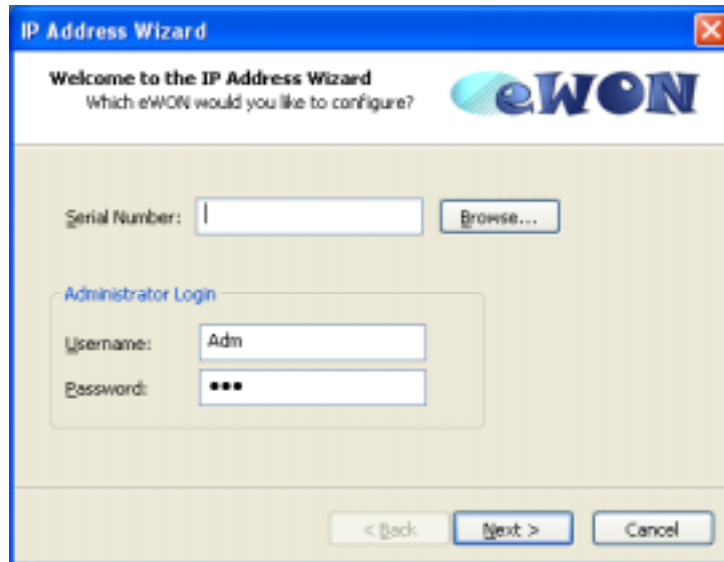
Step 4: Setting an eWON IP Address

By clicking on the *Set IP address link*, you can set or modify the IP address of any eWON that is connected on your network.

The default IP address is **10.0.0.53**

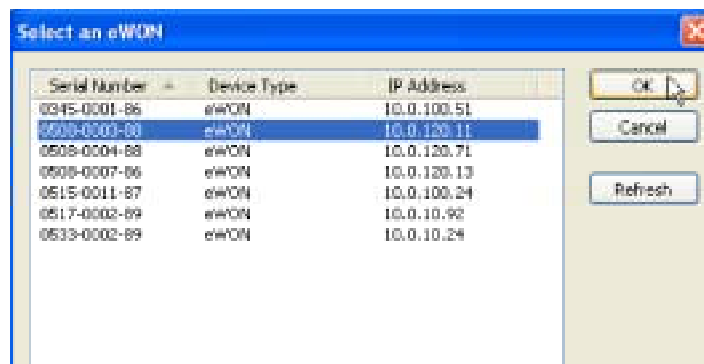
Default Username: **adm**

Default Password: **adm**



Enter the eWON serial number in the *Serial Number* field if you know it, or click on the *Browse* button.

In this example, the dialog box below then displays:



Serial Number	Device Type	IP Address
0345-0001-86	eWON	10.0.100.51
0508-0000-00	eWON	10.0.100.11
0508-0004-88	eWON	10.0.100.71
0508-0007-86	eWON	10.0.100.13
0515-0011-87	eWON	10.0.100.24
0517-0002-89	eWON	10.0.10.92
0533-0002-89	eWON	10.0.10.24

Select the eWON of which IP address you want to modify and click **OK**. You then come back to the previous wizard page, in which you must then enter the *Username* / *Password* fields (default: **adm** / **adm**) that are required to connect to the eWON:

GEM80 & eWON Setup Quick Guide



The screenshot shows the 'IP Address Wizard' window with the title 'Welcome to the IP Address Wizard' and the subtext 'Which eWON would you like to configure?'. The eWON logo is in the top right. Below the title, there is a 'Serial Number' field containing '0508-0003-88' and a 'Browse...' button. Underneath is an 'Administrator Login' section with a 'Username' field containing 'Admin' and a 'Password' field with three dots. At the bottom, there are three buttons: '< Back', 'Next >', and 'Cancel'. A mouse cursor is pointing at the 'Next >' button.

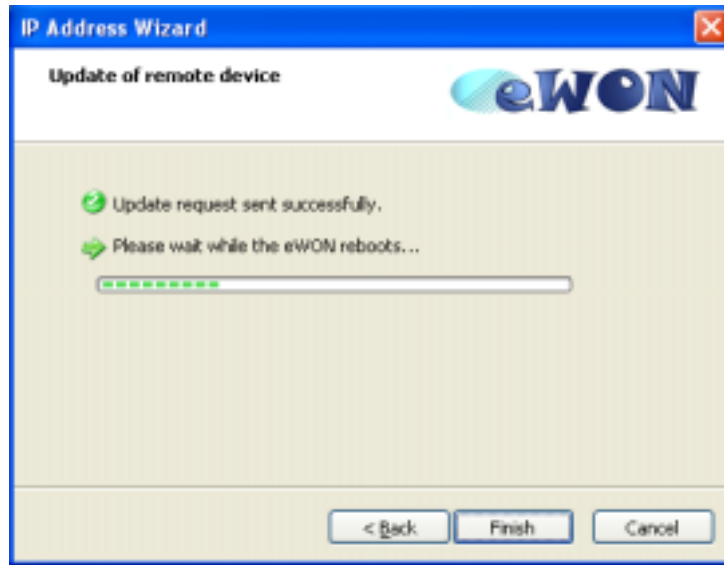
Then click on *Next* and set the *IP Address* and *Subnet Mask*:



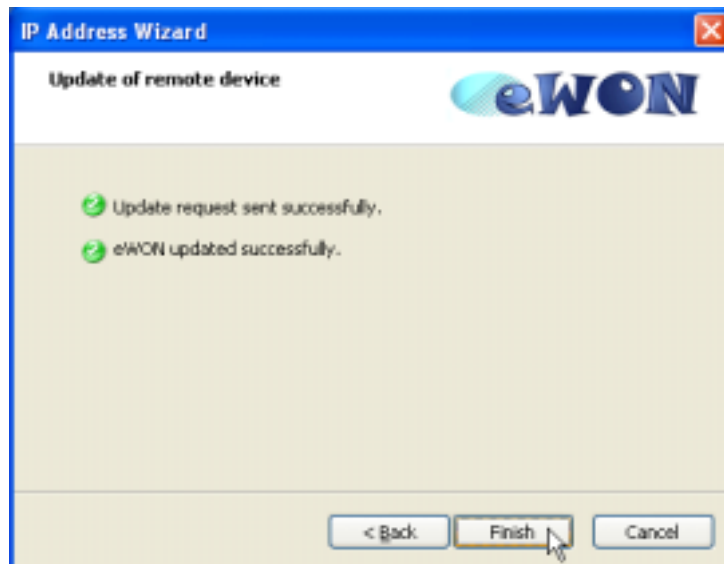
The screenshot shows the 'IP Address' configuration screen of the 'IP Address Wizard'. The title is 'IP Address' and the subtext is 'Here you can specify the new IP settings'. The eWON logo is in the top right. Below the title, the 'Serial Number' is displayed as '0508-0003-88'. There are four input fields: 'IP Address' with '10 . 0 . 120 . 11', 'Subnet Mask' with '255 . 255 . 0 . 0', and 'Gateway' with '0 . 0 . 0 . 0'. At the bottom, there are three buttons: '< Back', 'Next >', and 'Cancel'. A mouse cursor is pointing at the 'Next >' button.

Then click on *Next* again to launch the update and wait for the eWON to reboot:

GEM80 & eWON Setup Quick Guide



When done, click on ***Finish*** to exit from the IP Address Wizard.

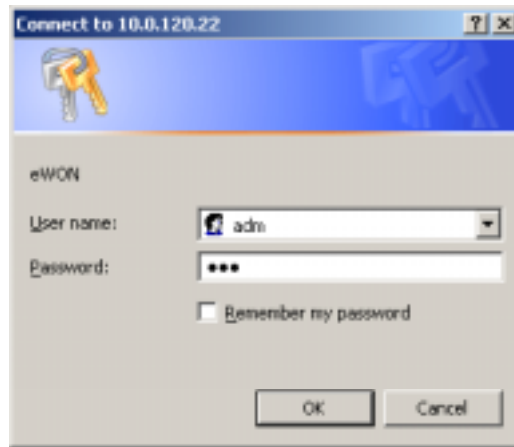


GEM80 & eWON Setup Quick Guide

eWON Configuration

Step 1: User logon

The eWON is configured via your Internet browser, enter the IP address of your eWON into your browsers address bar and press *enter*.



eWON login page

The default factory defined parameters to login on the eWON are:

IP address	10.0.0.53
Login	adm
Password	adm

eWON default login parameters

IMPORTANT! Password IS case sensitive but user name is not.

GEM80 & eWON Setup Quick Guide

Step 2: eWON serial port configuration

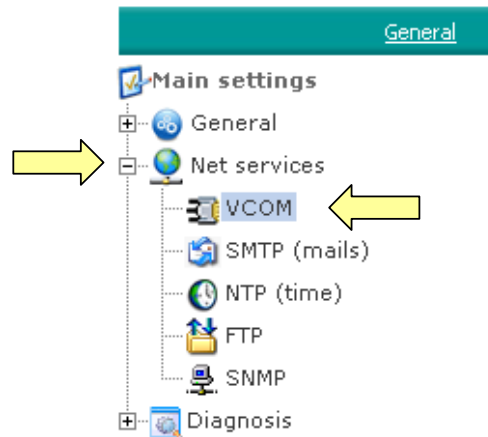
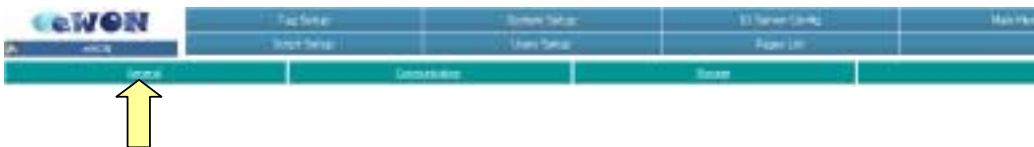
Once logged onto the eWON, select the *Configuration* option from the menu bar



Then the *System Setup* option.

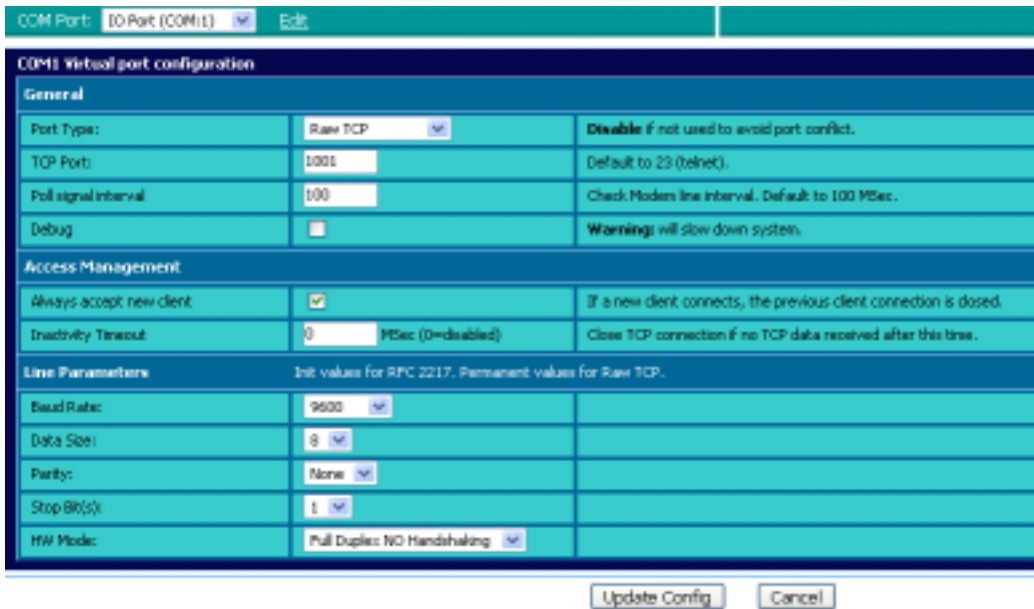


Then the *General* option from the lower menu bar.



Navigate to the *Net services* item in the menu, and select *VCOM*

GEM80 & eWON Setup Quick Guide



COM1 Virtual port configuration screen

Select the following setting from the COM1 Virtual port configuration screen:

General:

Port	Raw TCP
TCP Port	10001
Poll signal interval	100
Debug	Unticked

Access Management:

Always accept new client	Tick
Inactivity Timeout	0 (disabled)

Line Parameters:

Baud Rate	9600
Data Size	8
Parity	None
Stop Bit(s)	1
HW Mode	Full Duplex NO handshaking

Then select the **Update Config** button to update the eWON's configuration.

All necessary settings have now been completed and you can close your browser window.

GEM80 & eWON Setup Quick Guide

Appendix 1

Serial cable connections

- between eWON and GEM80 PLC (port3) (PRINT/PRG)

eWON				GEM
<u>RS232 9-pin</u>	<u>Pin</u>		<u>Pin</u>	<u>RS232 15-pin</u>
RXD	2	<----->	10	TXD
TXD	3	<----->	9	RXD
GND	5	<----->	14	0V
			1	
			15	
			2	
			14	

9 way D-type port on eWON

2 RXD
3 TXD
5 SG

GEM80 port 3 (15pin female – PRINT/PROG)

10 TXD
9 RXD
14 0V

Links at GEM80 port 3

1 & 15
2 & 14

CPUs without RS232 available on Port 3

Certain low-end (or older) GEM80 CPUs do not have RS232 connections on Port 3. For these PLCs, the GEM80 RS232 Current-loop Programming cable should be used as the connection between the PLC and the serial port of the eWON unit.

Programming Software:-

The above configuration has been proved using “Advanced GEM Programmer” – version 3.

This software is available from Advanced Technical Software Ltd.

Telephone : +44 (0) 1757 269068
Web site : www.advancedtechnicalsoftware.co.uk

GEM80 & eWON Setup Quick Guide

Appendix 2

EWON led front panel LEDs

